


Community Renewable Energy Projects

**Sustainable Energy Installations**

Lucy Aitchison  
West Dean 26 October 2004

### Sustainable Energy Installations

- Installers of small-scale renewable energy systems
  - PV
  - Wind
  - Hydro
- Large proportion of schemes installed are community renewable energy schemes



Promoting Renewable Energy, West Dean College, 26/10/04

### What are community renewables?




- Schools, colleges, universities
- Social housing
- Charities
- Community groups
- Hospitals
- Local authorities



Promoting Renewable Energy, West Dean College, 26/10/04

### Ringmer Community College

- 7.92 kWp PV system
- Retro-fitted to existing roof
- Uses high efficiency, CSI PV modules
- Will generate 5940 kWh per year

Promoting Renewable Energy, West Dean College, 26/10/04

### PV promotion




- Promoted to the local community
- System opened by the local MP
- Launch event with pupils, teachers and local people




Promoting Renewable Energy, West Dean College, 26/10/04

### Monitoring

- Large display
- Detailed monitoring data downloaded to a PC
- Monitored data used in science classes

Promoting Renewable Energy, West Dean College, 26/10/04

## Funding £

- 65% Solar Grants scheme £
- 35% EDF's Green Energy Fund £
- Assistance given by Renewable Energy Advice Service to gain funding £

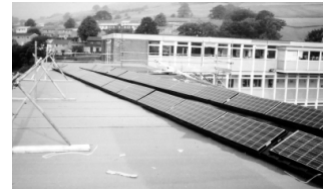


£

Promoting Renewable Energy, West Dean College, 26/10/04

## Calder High School

- Installation of 3 kWp PV system
- Flat roof installation
- Part-funded Calderdale Council
- Part of innovative 'Energy Garden' project
- Displays instantaneous power using swing needle meter (plus kWh meter)



Promoting Renewable Energy, West Dean College, 26/10/04



## SunRise project



- Fulltime Solar Development Officer based at Calderdale Council helping householders, businesses and community groups through the installation process
- Funded by Yorkshire Forward, to increase the uptake of Solar in the West Yorkshire Region
- Won a Eurosolar award



Promoting Renewable Energy, West Dean College, 26/10/04

## Wind at PCFE

- 2 x 6 kW Proven turbines to be installed on the roof of the Innovation Building
- Building constructed with wind installation in mind; reinforced and mounting points provided



Promoting Renewable Energy, West Dean College, 26/10/04

## Funding £

- BRITA (EC R&D project) – 22% £
- EDF SWEB Green Fund – 28% £
- Clear Skies – 50%



£

Promoting Renewable Energy, West Dean College, 26/10/04

## Parsons Green, Guildford

- PV tiles (and Solar Water Heating) on new houses for Apex Housing Group



Promoting Renewable Energy, West Dean College, 26/10/04

## St. Mary's Island

- Integrated PV installation on Doctors Surgery and Community Centre in Kent
- 2 x 5.1 kWp PV systems
- Project initiated by SEEDA
- 50% funded by developer



Promoting Renewable Energy, West Dean College, 26/10/04



## Piggs Corner, Thurrock

- PV installation on council-owned sheltered housing complex



Promoting Renewable Energy, West Dean College, 26/10/04



## Cambourne, Cambridgeshire

- PV and SWH installed on new buildings for Circle 33 Housing Trust
- Second project to install integrated systems on second phase of same site ongoing



Promoting Renewable Energy, West Dean College, 26/10/04



## Issues that can arise

- Planning
- Grant application deadlines
- Match funding



Promoting Renewable Energy, West Dean College, 26/10/04



## Surrey Community Centre

- Awarded a grant by the Solar Grants scheme in February 2004
- Building does not yet have planning permission
- Partly funded by developers of site (different objectives to community group)



Promoting Renewable Energy, West Dean College, 26/10/04

## Installer's perspective

- Long timescales of projects
- Future uncertainty of grants
- Downward pressure on prices



Promoting Renewable Energy, West Dean College, 26/10/04

